

REEL TALK



Surf Casting and Angling Club of WA

July 2020



Surf Casting and Angling Club of WA (Inc.)

PO Box 2834, Malaga WA 6944

ABN 29 925 237 020

Email: secretary@scac.net.au

Club Web page: <http://www.scac.net.au>

Acknowledgement of Donors

The club gratefully acknowledges the support from companies, organisations, club members and families for the donations towards our Presentation night.

Club Members:

Mal Head, Peter Osborne, John Curtis,

Bob Henderson, Alan Jones, Pat McKeown

Company Sponsors:

Alvey Australia

Belmont City Medical Centre (Dr Sri Srigandan)

Bladon WA (Martin Wearmouth)

Halco Tackle

J M Gillies Agencies

Western Angler Magazine

Buildcorp Developments (Victor Schilo)

Thank you for your valued support.

July 2020 : Reel Talk Contents

Cover	Preston Beach
	Acknowledgement of Donors
3	Contents
4	Club Committee and Life Members
5	President's Report
5	Member's Fee Schedule
5	July Meeting
6	2020 -21 Field Days
6	July Birthdays
7	June Field Day Report
10	Dry Casting Report
11	Fishing Trip
12	Club Shirts
15	Recorder's Report
16	Fishing Lines
17	Rules for tying knots
19	Whiting
20	Presentation Night
21	"Surf Caster's" Kalbarri
22	July Solunar Charts

Club Committee for 2019 - 20

President

Martin Wearmouth
0407 301 195
martin.wearmouth@gmail.com

Vice President

Peter Osborne

Treasurer

Victor Schilo
0413 152 550
treasurer@scac.net.au

Secretary

John Curtis
0412 776 558
secretary@scac.net.au

Reel Talk Editor

Victor Schilo

Dry Casting Officer

Ron Thomas
0407 630 053
dee.ron@bigpond.com

Field Day Officer

Martin Wearmouth
0407 301 195
martin.wearmouth@gmail.com

Assistant Field Day Officer

Vince Tomazin

Assistant Drycasting Officer

Bob Henderson

Committee Persons

Gary Parkinson
Chris Stickells

Recorder

Justin Rose
jwrose81@yahoo.com.au

Website Coordinator

Peet Wessels

AAAWA Delegages

Victor Schilo, Martin Wearmouth

All club emails should be sent to secretary@scac.net.au and all correspondence posted by mail should be addressed to:

PO Box 2834, Malaga WA 6944

**SCAC Life Members**

George Holman, Eric Parker, Ian Cook, Bob Henderson, Terry Fuller, Mal Head, Peter Osborne

Deceased life members: Vic Davis, Doug Edward, Lloyd Dunn, Dudley Brown, Noel Knight, Les Shand, Ron Kildahl, Bob Klein, Jim Strong

President's report July 2020



With more restrictions to be taken away in mid-July we are now looking to change tact again on the Presentation night. At our last meeting Bob Henderson put forward an idea to have it after Dry Casting with a BBQ but as the restrictions will all be lifted on 18th July we will move back to holding a dinner at the Croatian Club. This will be held on Saturday 19th September.

If you have any Perpetual trophies can you, please bring them back at the July meeting so we can arrange the new engraving.

We are now half way through 2020 and what a year it has been so far, lets hope the 2nd half is better but with Overseas and Interstate travel restrictions still looking like continuing for some time get out and support the Western Australian regional destinations, Maybe plan a trip to that fishing spot you have not been to before.

Martin Wearmouth; President

July 2020 General Meeting

Wednesday 8 July 2020 7.30pm

Coolbinia Sports Clubroom; Wordsworth Avenue, Yokine.

Agenda: Please notify the Secretary if you have any items for General business.

Membership Fees

The SCAC Membership Fees for the 2020/21 year are due from the 1st July.

BUT there is good news, subject to ratification at the August AGM, fees are now:

Single Membership	\$70
Family Membership	\$80
Concession Membership	\$50
Concession Family	\$60

Payment can be made via EFT (Please note your name in the remittance), Cheque or Cash at the monthly meetings.

The Secretary will be sending out the contact information forms for all members to complete and return.

Bank details: Surf Casting and Angling Club
BSB: 036 059
A/C: 880334

Field day venues for 2020/2021		
Dates	Venue	Boundaries
11 - 12 July 2020	Open Lines down 9.00am Saturday Lines up 9am Sunday	Open anywhere in WA
22 - 23 August 2020	Rottnest Island and Open Local Lines down 6am Saturday Lines up 9am Monday	Rottnest and Open anywhere in WA
26 - 28 September 2020 Long Weekend	Reef Beach Bremer Bay and standard local Lines down 6am Saturday Lines up 9am Monday	Reef Beach and local as below at bottom of page
17 - 18 October 2020	Dunsborough to White Hills Lines down 9.00am Saturday Lines up 9am Sunday	Dunsborough to White Hills and local as below at bottom of page
14 - 15 November 2020	Cervantes to Leeman Lines down 9.00am Saturday Lines up 9am Sunday	Cervantes to Leeman and local as below at bottom of page
12 - 13 December 2020	Lancelin to Greenhead Lines down 9.00am Saturday Lines up 9am Sunday	Lancelin to Greenhead and local as below at bottom of page
Sunday 24 January and Monday 25th January 2021 make own long weekend Australia day is Tuesday 26th	Open Lines down 6.00am Sunday Lines up 9am Tuesday	Open anywhere in WA
13 - 14 February 2021	Dunsborough to White Hills Lines down 9.00am Saturday Lines up 9am Sunday	Dunsborough to White Hills and local as below at bottom of page
27 Feb - 1 March 2021 Long Weekend	Geraldton to Kalbarri Lines down 6am Saturday Lines up 9am Monday	Geraldton to Kalbarri and local as below at bottom of page
3 April – 5 April 2021 Easter Long weekend	Bluff Creek and standard local Lines down 6am Saturday Lines up 9am Monday	Cheyne's and Bluff Creek area and local as below at bottom of page
AAA only - 24 - 26 April 2021 ANZAC day Long Weekend	Cheyne's Beach/Bluff Creek see AAA website for details	Bremer Bay to Albany
Local boundaries are from Lancelin in the North to Point Peron in the South Lines Down for long weekends and Rottnest – Saturday 6.00am Lines up for long weekends and Rottnest – Monday 9.00am Lines Down on Standard weekends – Saturday 9.00am Lines up on Standard weekends – Sunday 9.00am Sign-on / Weigh-in times, possible fish together spots and locations to be decided at the general meeting prior to the Field Day		

Birthdays for July

7th July

Peter Osborne "Life Member"

HAPPY BIRTHDAY PETER

Enjoy your special day



I left home at 6.40am for my drive down to Preston Beach it was raining on an off for the drive but only light rain, I meet Peet and Vince in the car park and after letting the tyres down we headed north on the beach to find quite a lot of sea weed in the wave break and floating in the water, we drove about 14km and it was even worse so we came back to a spot about 7km north of the car park and set up the fishing gear.



Kangaroos greeted me in the Preston car park

This spot was fishable with sea weed coming though but if you could keep you line up out of the wave break your bait could stay out ok but at times the weed was too thick so you had a break while the weed moved through, the morning fishing started ok with Peet getting the first Herring, Whiting and Flathead then I got a Whiting and Herring before 12pm but it was a long time between fish.

Gary arrived about 1pm after rescuing a bogged 4WD on his way up the beach, The weather was good a couple of light showers in the morning but the afternoon was sunny and a bit of cloud, the wind was around 15 knots most of the day with some lighter breaks but quiet enjoyable to be on the beach.



I caught and released a 27cm Skippy just after Gary arrived and it was still hard going with only a few small fish coming in and not too many good bites, at 3.35pm I got a good hook up and after a short fight I managed to drag a salmon through the weed onto the beach, At 75cm and 4.48kg it was a welcome site for sure, Peet followed 5 minutes later with another salmon at 74cm and 4.3kg, My Salmon was hooked on my size 1 circle hook which had a piece of squid the mulie on the same rig was still in tact so this fish must have only wanted a snack.



The rest of the afternoon only saw some small fish and no Tailor, a good range of species with Salmon, Herring, Whiting, Mullet, Trumpeter & Skippy, as the tide dropped the weed became harder to avoid and it was back breaking work, Vince and Gary left at 5pm and Peet and I left at 5.40pm, I had planned to stay the night but with the prospect of fighting weed at night and in the morning decided to head home for a warm bed and a good night's sleep.

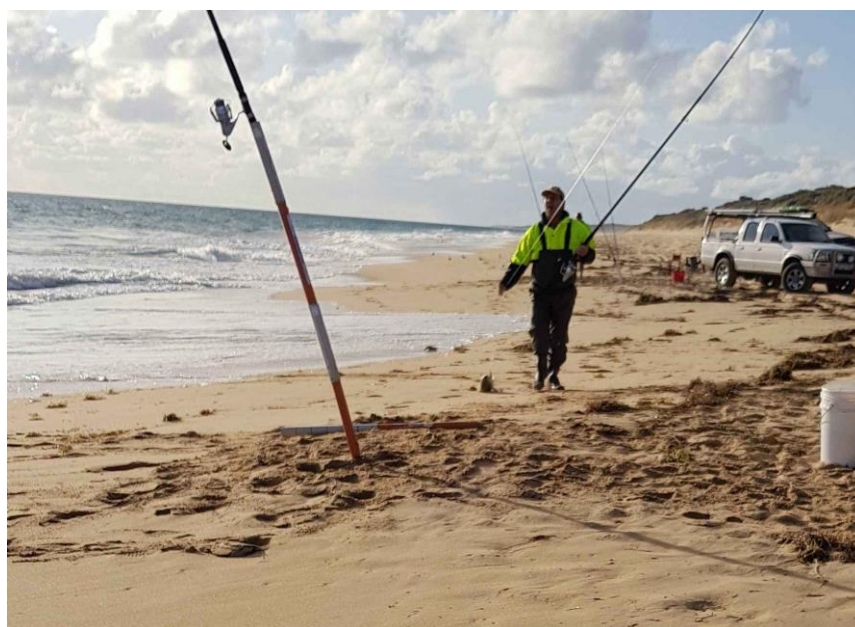


Ron Thomas – Drove up to Dongara area to find beaches full of sea weed so he worked his way back stopping at Sandy cape and again found sea weed, moved back to Hill River which also had a lot of sea weed, he managed to catch 1 Herring at Hill River before heading home.

ANGLER		Species	Species	Species	Species	Species	Species	Species	Total weight	No. of Species	No. of fish	F.D. points	Attendance		Total points
		Salmon Western	Flathead (all species)	Herring Australian	Whiting	Mullet Yelloweye	Trumpeter - Grunter striped	Trevally Silver Skippy					Field Day	General Meeting	
Preston															
Martin Wearmouth	Number	1		3	2		2	1	5.22	5	9	111.2	1	1	131.2
	Total weight	4.03		0.38	0.16		0.30	0.35							
	Weight of best														
Peet Wessels	Number	1	1	4	3				5.17	4	9	100.7	1		110.7
	Total weight	3.87	0.45	0.57	0.28										
	Weight of best														
Gary Parkinson	Number			1		1			0.28	2	2	24.8	1	1	44.8
	Total weight			0.11		0.17									
	Weight of best														
Vince Tomazin	Number												1	1	20.0
	Total weight														
	Weight of best														
	Number														
	Total weight														
	Weight of best														
Cervantes															
Ron Thomas	Number			1					0.11	1	1	12.1	1	1	32.1
	Total weight			0.11											
	Weight of best														

Top scores up to June		
Rank	Angler	Total points
1	Peet Wessels	506.7
2	Martin Wearmouth	501.7
3	Vince Tomazin	214.6
4	Sandra Wessels	158.0
5	Mark Hansen	120.7
6	Dom - visitor	120.0
7	Ron Thomas	115.9
8	David Wilding	59.0
9	Gary Parkinson	54.8
10	David Trainer	30.0

Field day prizes for June			
Section	Angler	Species	Weight
Best scale fish	Martin Wearmouth	Salmon Western Australian	4.03kg
Best bag of scale fish	Martin Wearmouth		5.22kg
Best shark			
Best bag including sharks			



DRYCASTING – 7th June 2020

The day did not start off all that well for me, well it didn't finish all that well either. Regardless, I arrived at the oval at 6am, turned on the phone to see what Willie Weather had to say regarding the forecast for the day, and surprise, surprise, the forecast had been changed from east northeast winds to west south west, so off I went to the western side of the park, had the course set up by 6.45am, but the wind was coming from the east. Turned on Willie again, and the forecast was for southerlies, but something caught my eye that said Guildford was 8.6km from Sydney airport. Oh sh...

Had everything back in the car by 7am and set up again by 7.30. What a start for the day.

I wasn't the only one having a bad day. Everyone on the day had at least one out in the distance events, all except Mal, that is who had a break off to make up for it. Gary took out the honours with 3 outs.

Chas had the longest casts in the events with 158.75m being the longest for the day. 30 was the best in the SHA by myself with Mark close behind with 29.

Hendo took out the honours in the DHA with 140 and Chas with 130.

Gary had a day that you would want to forget in a hurry, 3 outs and 129 in the DHA.

Someone else will probably have to fill in for me next month as I may be at Quobba.

RON THOMAS

DCO

<u>SURF CASTING & ANGLING CLUB</u>														
<u>Dry casting results - 7th June 2020</u>														
	<u>56 gram</u>					<u>Artificial Bait</u>					<u>112gram</u>			
	<u>Cast</u>	<u>Cast</u>	<u>Total</u>			<u>Cast</u>	<u>Cast</u>	<u>Total</u>			<u>Cast</u>	<u>Cast</u>	<u>Total</u>	
<u>Veterans</u>	1	2		%		1	2		%		1	2		%
MAL HEAD	102.54	78.60	181.14	68.09		90.82	86.61	177.43	81.76		B/O	105.40	105.40	50.20
BOB HENDERSON	120.02	121.24	241.26	90.61		97.03	103.42	200.45	92.37		OUT	OUT	0.00	0.00
RON THOMAS	132.23	134.04	266.27	100.00		107.12	109.88	217.00	100.00		OUT	138.16	138.16	65.81
KLAUS SCHONWOLF	94.23	96.75	190.98	71.72		94.11	OUT	94.11	43.37		101.39	108.55	209.94	100.00
GARY GILDERSLEEVE	115.76	118.37	234.13	87.93		97.49	OUT	97.49	44.93		OUT	OUT	0.00	0.00
<u>Seniors</u>														
MARK HANSEN	92.42	OUT	92.42	100.00		87.15	91.47	178.62	100.00		OUT	108.62	108.62	100.00

<u>SURF CASTING & ANGLING CLUB</u>																			
<u>Dry casting results - 7th June 2020</u>																			
	<u>Double Handed Accuracy</u>											<u>Single Handed Accuracy</u>						<u>Total</u>	<u>Attendance</u>
	<u>Target number</u>											<u>Target distance</u>							<u>D/Casting</u>
<u>Veterans</u>	3	3	1	1	4	4	2	2	Total	%		1st	2nd	1st	2nd	Total	%		<u>Points</u>
MAL HEAD	14	24	0	9	18	18	13	8	104	74.29		0	5	0	6	11	36.37	310.71	10
BOB HENDERSON	5	21	19	20	23	18	24	10	140	100.00		7	6	5	9	27	90.00	372.98	10
RON THOMAS	21	22	16	22	3	4	15	10	113	80.71		7	7	10	6	30	100.00	446.52	10
KLAUS SCHONWOLF	5	1	19	8	13	0	6	6	58	41.43		4	4	1	6	15	50.00	306.52	10
GARY GILDERSLEEVE	15	20	19	21	8	19	13	14	129	92.14		5	7	6	5	23	76.67	301.67	10
<u>Seniors</u>																			
MARK HANSEN	1	16	14	4	0	12	13	18	78	100.00		9	8	7	5	29	100.00	500.00	10

VETERANS BEST CASTS FOR THE YEAR 2020 - 2021											
LONGEST 56 GRAM								134.04			RON THOMAS
LONGEST ARTIFICIAL BAIT								118.18			RON THOMAS
LONGEST 112G								152.17			RON THOMAS
HIGHEST DOUBLE HANDED ACCURACY								140			BOB HENDERSON
HIGHEST SINGLE HANDED ACCURACY								30			RON THOMAS
SENIORS BEST CASTS FOR THE YEAR 2020 - 2021											
LONGEST 56 GRAM								92.42			MARK HANSEN
LONGEST ARTIFICIAL BAIT								92.63			MARK HANSEN
LONGEST 112G								108.62			MARK HANSEN
HIGHEST DOUBLE HANDED ACCURACY								135			MARK HANSEN
HIGHEST SINGLE HANDED ACCURACY								29			MARK HANSEN

The fishing trip without fishing

by Chris Stickells

On Sunday 21 June, Helen and I planned to take our disabled wheel bound client to Garvey park for some fishing and some lunch. We packed some sandwiches, drinks and fishing tackle and headed down to the disabled platform at the park, well at least that was the intent.

We sat on the grass and had our sandwiches and were joined by my friend Elliot. While eating we missed our opportunity to use the platform as others came along and claimed it. At this point I noted the tide was running down fast and I lost interest in spinning a reel which was impossible without access to the platform. So, the client, Elliot and I went for a wonder, while Helen took off to go buy her new phone.

We were all making the most of the day. The park has disabled parking and there are bbqs and other facilities. It was still a great day out and about without fishing.



Surf Casters Club polo shirts ordering details July 2020

1 free shirt per member with payment of 2020 membership fees

PS20 Black/Gold Men's short sleeve polo shirt Embroidered on Chest with SCAC logo



PS20 Men's CoolDry® Raglan Short Sleeve Contrast Polo

EASY FIT	S	M	L	XL	2XL	3XL	4XL	5XL
Half Chest	53.5	56.0	58.5	61.0	63.5	66.0	68.5	71.0
Body Length	70.0	72.0	74.0	76.0	78.0	80.0	82.0	84.0

Weight & size measurements are for guidance only



PS43 Black/Gold Men's long sleeve polo shirt Embroidered on Chest with SCAC logo



PS43 Men's CoolDry® Raglan Long Sleeve Contrast Polo

EASY FIT	S	M	L	XL	2XL	3XL	4XL	5XL
Half Chest	53.5	56.0	58.5	61.0	63.5	66.0	68.5	71.0
Body Length	70.0	72.0	74.0	76.0	78.0	80.0	82.0	84.0

Weight & size measurements are for guidance only



PS19 Black/Gold Ladies short sleeve polo shirt Embroidered on Chest with SCAC logo



PS19 Ladies' CoolDry® Raglan Short Sleeve Contrast Polo

EASY FIT	8	10	12	14	16	18
Half Chest	46.0	48.5	51.0	53.5	56.0	58.5
Body Length	62.0	64.0	66.0	68.0	70.0	72.0

Weight & size measurements are for guidance only



PS44 Black/Gold Ladies long sleeve polo shirt Embroidered on Chest with SCAC logo



PS44 Ladies' CoolDry® Raglan Long Sleeve Contrast Polo

MODERN FIT	8	10	12	14	16	18
Half Chest	46.0	48.5	51.0	53.5	56.0	58.5
Body Length	62.0	64.0	66.0	68.0	70.0	72.0

Weight & size measurements are for guidance only



PS24 Black/Gold Kids short sleeve polo shirt Embroidered on Chest with SCAC logo



PS24 Kids' CoolDry® Raglan Short Sleeve Contrast Polo

EASY FIT	4K	6K	8K	10K	12K	14K	16K
Half Chest	38.5	41.0	43.5	46.0	48.5	51.0	53.5
Body Length	52.0	55.0	58.0	61.0	64.0	67.0	70.0

Weight & size measurements are for guidance only



PS43K Black/Gold Kids long sleeve polo shirt Embroidered on Chest with SCAC logo



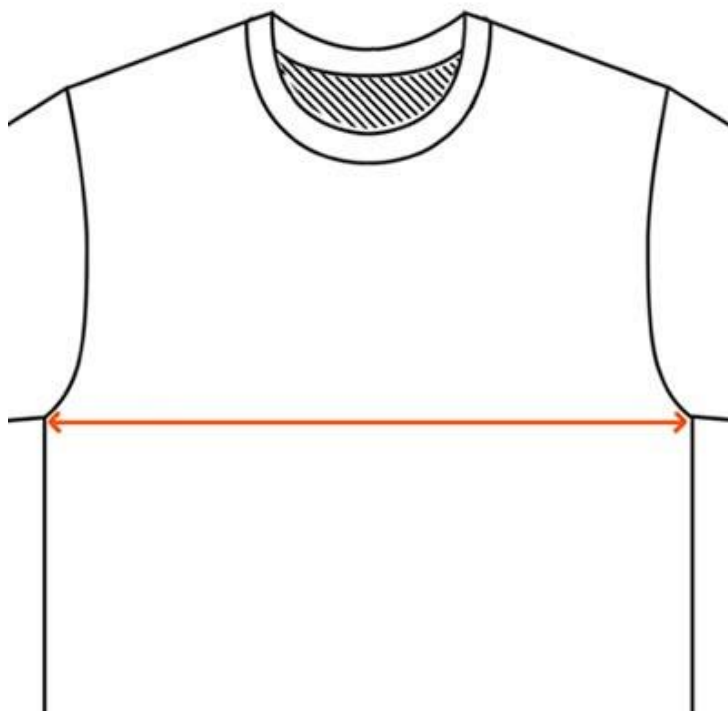
PS43K Kids' CoolDry® Raglan Long Sleeve Contrast Polo

EASY FIT	4K	6K	8K	10K	12K	14K	16K
Half Chest	38.5	41.0	43.5	46.0	48.5	51.0	53.5
Body Length	52.0	55.0	58.0	61.0	64.0	67.0	70.0

Weight & size measurements are for guidance only



On a shirt that fits you well lay it flat on a table to measure just under the arms from seam to seam,
Place one end of the measuring tape to the end of the seam and stretch it across the chest to the other seam.
Once you have your size compare that to the half chest size on the above charts, it will be best to go up in size if you
measurement is between 2 sizes, eg if you measure a men's shirt half chest at 62cm go up to a size 2XL which is 63.5cm.



**Ordering form below, please fill in and take to a meeting
or email all details to secretary@scac.net.au**

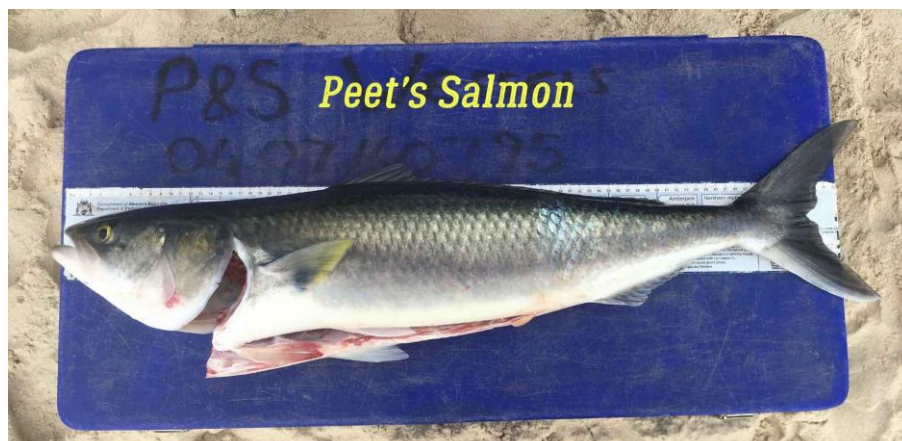
Members name	Polo style	Size	Add pocket on left chest
1 free shirt per member with payment of 2020 membership fees	Eg Men's short sleeve	Eg XL	Optional Yes or No

Shirts will be embroidered to order allow 3 weeks for them to be ready, you can collect at a meeting or from Bladon WA in Balcatta (contact Martin 0407 301 195)

Extra shirts can be purchased if needed prices are below

Men's, Ladies and Kids Short Sleeve \$22.00 each (add a pocket extra \$5.00 total \$27.00)

Men's, Ladies and Kids Long Sleeve \$25.00 each (add a pocket extra \$5.00 total \$30.00)



Recorder's Report

It was good to see the competition year kick off in May with some great fish caught. A couple of new faces David Wilding added a Salmon to his species badge and at 3.6kg to his Masters badge, David Trainer also added Herring to his species badge

In the open competition the ledger has been wiped clean to start fresh and the first entry was a solid salmon weighing 6kg at Reef Beach from Peet Wessels, There were some great photos taken on that trip and the gutters looked superb. The Salmon was caught outside of the competition "lines down period" hence eligible for the Open Competition. During the field trip amongst a large bag and plenty of points Peet also caught a large Tailor 3kg gilled and gutted. Well done Peet

Now the borders are open people can take a break and head away to some fishy destinations, don't forget to keep the Open Competition in mind.

If you're unsure of any fish caught for eligibility just give me a call

Justin Rose

Open fishing competition 2020/21

The Open Competition is for fish caught between 1 May 2020 and 30 April 2021, other than on Club gazetted Field days, but not in any other AAA affiliated club event on the same dates. Entries for the Open competition close **30 days after capture**. See Competition Rules Section 4.

Section	For	Minimum	Entry
1	Most meritorious capture	None	To be awarded by Committee
2	Best shark	4.5 kg	
3	Best mullet	5 kg	
4	Best salmon	3.5kg	Peet Wessels, 6kg Reef Beach 1/6/20
5	Best flathead	0.5 kg	
6	Best tailor	1.5 kg	
7	Best samson fish	5 kg	
8	Best fish on single handed rod maximum 4kg line class (Bait)	Legal size	
9	Best pink snapper	2 kg	
10	Best tarwhine	0.5 kg	
11	Best mackerel	4 kg	
12	Best skipjack trevally (southern)	1 kg	
13	Best trevally (northern)	2 kg	
14	Best snook or pike	0.5 kg	
15	Best black or yellow finned bream	0.6 kg	
16	Best scale fish other than sections 3-15	2 kg	
17	Best fish caught on fly rod.	Legal size	
18	Best fish caught using a soft plastic or hard body lure on a single handed rod (4kg line max.)	Legal size	

Barron Lure Competition

The Barron Lure competition is sponsored by Eric Parker, who donates the trophies. Try Eric's Poppers, you will not be disappointed. The rules for this competition are the same as for the clubs open fishing competition, plus the fish must be caught on a popper lure and a single fish cannot win more than one Barron lure section

Heaviest Tailor on lure No Entry

Heaviest Salmon on Lure No Entry

Heaviest Scale fish on lure No Entry

MONO, FLUOROCARBON, AND BRAIDED FISHING LINES

Extracted from Sportfishing Magazine

Pros and cons of the three main types of fishing line

You want a new fishing line for your baitcasting or spinning reel and you're in the store confronted with more choices and claims than your brain can process. It's complicated.

At the very least you need a primer on the pros and cons of these different types.

Monofilament:

a single strand of nylon and often referred to simply as "mono;"

Fluorocarbon:

A single strand of polyvinylidene fluoride

Microfilament:

Fused or braided strands of ultra-high-molecular-weight polyethylene and commonly referred to as "braid" or "braided" line.

There's also copolymer or hybrid lines, which are a single strand of a blend of complementary resins or different materials. These have a mix of the qualities of their monofilament and fluorocarbon parents.

Pros and Cons

The qualities that a good- to high-quality mono, fluoro, and braid product have.

Monofilament

Pros:

Good knot strength; suitable for a wide range of common fishing knots; smooth and easily castable; low visibility; good colour retention; generally good abrasion resistance; floats; economical price.

Cons:

Absorbs water so properties change from dry to wet; mid to high degree of stretch; retains memory; deteriorates from exposure to ultraviolet (UV) light.

Comments:

Mono was by far the dominant line category several decades ago; it now garners over a third of the market share. It's easy to use for general purposes and with all reel types, and can be forgiving. Its low cost compared to the other lines also makes it popular.

Fluorocarbon

Pros:

Extremely low visibility; denser than water, so it sinks; low stretch; excellent abrasion resistance; more resistant to UV light deterioration; good knot strength; suitable for a wide range of knots; does not absorb water so properties are the same dry or wet.

Cons:

Stiffer than mono, especially in higher strengths; sinking quality not helpful in all angling situations; cost is much more (roughly 50 percent) than mono.

Comments:

Fluorocarbon makes up just over a quarter of the fishing line market. It excels in clear water applications and its low stretch and greater durability make it popular for hard hook sets and fishing in cover. It is highly favoured as a leader material, less so as full-spool material, although manufacturers are working on less wiry full-spool products.

Microfilament (Braid)

Pros:

No, or extremely low, stretch; diameter that is much less than comparable strength mono; does not absorb water or change characteristics from dry to wet; floats; more supple than other lines and has no memory; resistant to UV deterioration.

Cons:

Dubious abrasion resistance (some are coated); colour fades over time; can only use certain knots (especially Uni and Palomar); highly visible in the water; harder to use with older reels; Line tangles are difficult to deal with in lighter strengths; cost is much more (roughly 50 percent) than mono.

Comments:

Microfilament fishing lines have been available since the early 1990's and have grown increasingly popular. They now command a third of the marketplace.

Increased sensitivity for strike detection, solid hook sets, and distance casting (with high-strength products) are great benefits, and the line is more economical than it appears because it lasts much longer than comparable mono.

Some products fade in colour, making them more visible, and actual wet breaking strains is hard to ascertain.

THE RULES OF KNOT TYING

There are basic rules that apply to the tying of all knots in nylon monofilament, copolymer and co-filament lines. These rules apply in differing degrees to most of the knots, splices and hitches formed in multi-strand materials, such as Dacron, Micron, braided nylon and wire or cable leaders.

Knowing and adhering to these rules will reduce the incidence of knot failure in your fishing endeavours.

RULE 1: Be thoroughly familiar with all the knots you tie and continually practice the tying of those knots.

RULE 2: Always lubricate knots before tightening them, either with saliva, water or another similar lubricant. Knots tied in nylon monofilament, copolymer and cofilament lines are highly susceptible to heat friction.

RULE 3: When tightening the knot, do so gently but firmly. Do not draw the knot quickly as this can generate heat damaging the line. Give a few test pulls on the newly tied knot.

RULE 4: If you are not happy with a knot, always re-tie it until you are satisfied. Remember that a knot is effectively the weakest link between you and the fish and the stronger and better tied it is, the more chance you have of catching fish.

TRIMMING TAGS

Tags should be trimmed to an appropriate length and trimmed with a pair of clippers or a knife as opposed to teeth.

WHY KNOTS FAIL

Knots fail for a number of reasons. Slippage is the most common and is usually due to insufficient wraps in the knot or trimming the tag end too short. Slippage is also a major factor in the second common cause of knot failure – heat damage due to friction. Insufficiently tightened knots often fail when sudden pressure is applied to them, such as the strike of a fish.

Lastly, knots can also fail when one strand of line cuts another. This is most common when lighter lines are joined to heavier, thicker lines. In knots where one line cuts across another, such as in the Overhand knot, the strength of the knot is reduced by as much as 50%. In all knot tying the aim should be to reduce the chance of failure and retain as much line strength as possible.

TYING KNOTS IN LIGHT LINE

Knots in light lines, or lines under 3 kg, pose unique problems. Small errors in technique will cost you more when tying these knots as opposed to in heavier line. Extra care should be taken with light line knots and any knot modification or improvement should be utilised. Using an extra wrap or two in a specific knot is a good idea in light line. Doubling the line is also recommended to strengthen the knot. Always leave a sizable tag end when tying a light line knot.

TYING KNOTS IN HEAVY LINE

Heavy line knots have their own associated problems. Most problems are related to the physical difficulties of twisting or wrapping thick line. Knots on line between 25 and 100 kilos can be tied, but need modifications. Firstly, twists and wraps in knots need to be reduced. Heavy line knots also need to be tightened with care and up to 50% of the lines breaking strain in pressure needs to be applied. Pulling the tag end of the line is also advisable. Finally, melting the tag end to a stopping blob using a flame is not recommended as it risks damaging the line and weakening it.

HANDS, FEET AND MOUTH

Most experienced knot tiers use their hands, fingers, mouths and even feet to tie knots. Mastering knots will invariably require you to use your limbs in a dexterous manner for the best results. Developing your own personalized style will serve you well.

DISCARDING LINE

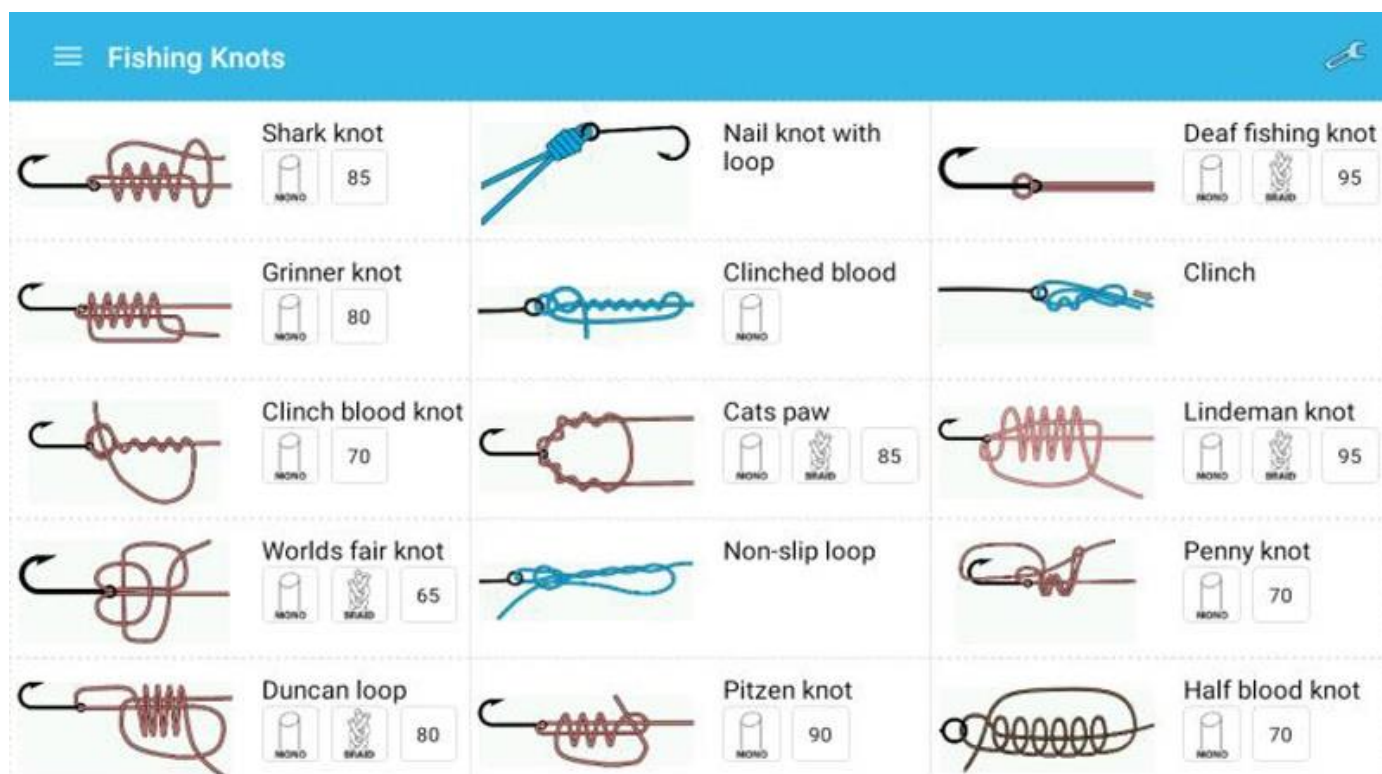
It must be remembered that line offcuts are a marine hazard and stay in aquatic ecosystems for a long time posing a series of threats. Line offcuts should always be collected and disposed of or recycled. There is no excuse for tossing away used or broken fishing line.

KNOTS FOR ATTACHING TERMINALS

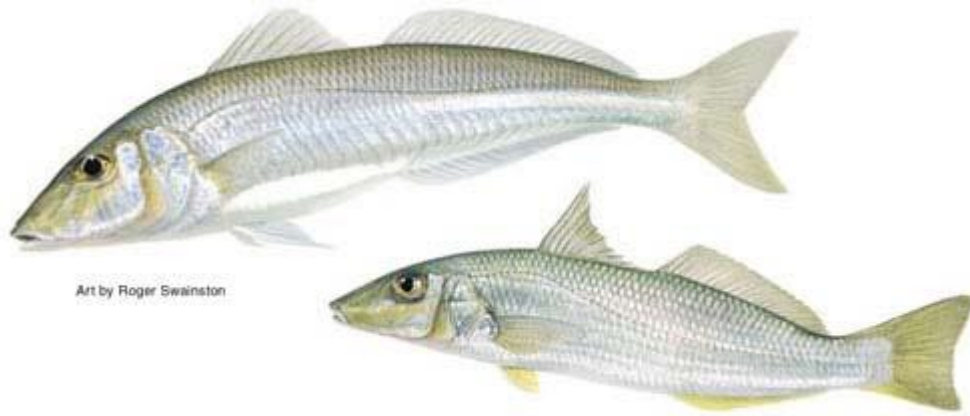
Terminal tackle is the name given to all fishing essentials such as hooks, swivels, sinkers, floats, rings, lures and flies. Basically anything attached to lines to catch fish. Knots joining terminal to line are the most important an angler needs to master. Anglers should become proficient in at least three knots for attaching line to terminal that suit their particular style of fishing.

KNOTS FOR JOINING LINES

Knots for joining line are mostly useful when assembling leaders, particularly tapered leaders. They are often used when a tangle needs to be removed from the middle of a line or when an additional line needs to be added to existing line.



WHITING, SCHOOL & YELLOWFIN



Above: Southern School Whiting. (*Sillago bassensis*)

Below: Yellowfin Whiting (*Sillago schomburgkii*)

Introduction

Far from a pushover to catch, the rapid-fire bite of the Western School Whiting and Yellowfin Whiting requires some quick reflexes, or you'll be spending the day refining your baiting up technique rather than catching fish.

Yellowfin whiting are a worthy adversary for the light tackle hunter. Fat and more powerful than you might think, yellowfin feed in shallow inshore waters and are easily spooked. Once hooked, they give a fine account for themselves, but careful preparation is required to be consistently successful.

Western school whiting (sometimes called sand whiting) are smaller and ravenous feeders. Placed in the food chain somewhere above whitebait, the smaller fish are a favourite food of the tailor and the larger fish are a tasty meal for humans.

Scientific Information

Yellowfin whiting spawn from September to January in northern WA through to Shark Bay, which has a big population. As you move further south, yellowfin spawn along the inshore waters and estuaries right through to eastern Australia around December but may spawn as late as February

A smaller 22 cm fish can have 170,000 eggs while a larger 32 cm fish can have 220,000 so you can see why larger breeding stocks must be treated with care. Before spawning, ripe fish break off from the main school and form smaller breeding schools. After spawning occurs, they gather during summer in the inshore waters before heading deeper as the temperatures cool. This means you can catch whiting over summer knowing that they have done their breeding for the year.

How To Catch Them

The small whiting that are in plague proportions almost everywhere are actually Southern School Whiting not Sand Whiting. The hardest thing about them is usually finding some good-sized models. From the shore it's very hit and miss with most beaches able to supply you with heaps but the size seems to usually be small. By changing your approach, a little you'll find that you start to do much better.

School whiting seem to live around surf beaches and most you'll encounter are quite small in size. They destroy baits quickly and are hard to catch unless you are fishing with very small hooks. They are also the most common whiting caught offshore in waters of 5-20 m of depth.

Yellowfin whiting are most common around Penguin Island and beaches in the northern suburbs like Trigg and Brighton Road where they school in the shallows each summer. They are also present in the lower reaches of the Swan River and, for some reason, South Beach south of Fremantle. This is probably due to the lack of surf at this beach, which is protected, and slopes away quickly compared to others.

To find large school whiting from shore it's a case of potluck. Any beach will almost certainly contain a whiting population and the real task is to deter the babies and get to the decent fish. The best way to do this is to use a durable bait like squid or, even better, wogs or ox heart which are hard to pull off. By using a rig with a small sinker and dragging it slowly, you will stir up the bottom which attracts them. A long shanked hook will also stop the smaller fish swallowing the whole lot.

Many anglers like to thread on a small length of red tube above their hook that resembles a worm. It doesn't matter if you're not using worm baits because once the fish are attracted to the motion, they will eat anything. It is unproven whether this works, but it certainly doesn't deter the fish and every 1% will help you with your catch.

Small fish will have a go, of course, but larger ones will occasionally sneak through the wall. Targeting yellowfin whiting is a little easier because you don't generally get smaller ones. Penguin Island is our favourite place to catch them, but it can be hard because they can see you and your line. It is better to use a 2 – 3 kg line and leader with a tiny running ball sinker. The best bait is worms because you won't get pickers and they're the natural food.

Other great places to try are Brighton Road, Cottesloe and Trigg. The lower reaches of the Swan also has a transient population but dusk is the only time to fish or blowies will drive you mad. South Beach is very easy to fish because they're less fussy and, when they're on, you'll do very well. Another popular location is Coodanup in the Peel Harvey estuary at Mandurah. Here anglers wade and cast until they find schooling fish. This location is very popular and early summer mornings will see many anglers wading and spreading out across the estuary.

Fly fishing for whiting is becoming very popular and has caused them to be known as the poor man's bonefish around Perth. They may look a little like bonefish but that's where the similarities end. The real skill in fly fishing for whiting is the hooking rather than the landing of the fish. The now popular bloodworm fly is by far the best way to target them using light leaders like 2 kg or, even better, fluorocarbon. The strip should be very slow or even stationary.

There is no size limit for school and yellowfin whiting and the bag limit is 30 but you are urged to fish sensibly and go for quality rather than quantity.

Articles by John Curtis

Surf Caster's Presentation Night

Saturday 19th September
At

Croatian Club

18 Wishart St, GWELUP

FREE TO ALL MEMBERS

Save the date



5 Mallard St Kalbarri WA

We can now proudly say that the “oldie” but a goodie, Surfcasters Kalbarri beach shack is completed to a level that we are happy with (I am sure you will be too if you get the chance to go there and reminisce). A few dollars were spent getting it to this stage, but I am sure if you want to go for a holiday you will be impressed.

We have retained the ambiance of the wonderful shack, but with a few added luxuries, with most of the builders and helpers that assisted, making comments of the place has a “great feel about it”.

The additional room that has a large bathroom with disabled facilities in it is actually very pleasant, as is the “wheel in” wardrobe.

The back-patio area is half the size but is solid and all tiled, easily cleaned!

The BBQ will bring back some great memories I am sure.

The Lawned area is getting better each visit and NO PRICKLES!

Reticulation works a treat, as with the dinky that is a pot plant, that has rosemary, mint, basil and a few other herbs in.

Also along the front of the house are bunches of the pink/purple native plant that is from Kalbarri that when they flower will look a treat, I am sure.



If you want to use the property, please contact Ray White Kalbarri 99370400 and ask for Deb Goddard or Loni they are very pleasant, or go online

<https://www.kalbarriaccommodation.com.au/accommodation/Kalbarri/House/187-Surf-Caster-Kalbarri-WA/>

I would dearly love to see you there to enjoy the fruits of my better half and my labour.

Enjoy and stay safe.

Pat and Di Shinnick 0408 085 516.

SOLUNAR PREDICTIONS FOR PERTH FOR JULY 2020

DAY / DATE	PREDICTION	PREDICTED PRIME TIMES		MOON PHASE
Wed 01	FAIR	18:54 – 20:54	06:28 – 08:28	FIRST GIBBOUS
Thurs 02	FAIR	19:49 – 21:49	07:21 – 09:21	
Fri 03	BEST	20:46 – 22:46	08:18 – 10:18	
Sat 04	GOOD	21:45 – 23:45	09:16 – 11:16	
Sun 05	GOOD	22:43 – 00:43	10:14 – 12:14	FULL MOON
Mon 06	BEST	23:38 – 01:38	11:11 – 13:11	
Tues 07	FAIR	=	12:05 – 14:05	
Wed 08	FAIR	00:31 – 02:31	12:55 – 14:55	
Thurs 09	POOR	01:19 – 03:19	13:42 – 15:42	
Fri 10	POOR	02:05 – 04:05	14:26 – 16:26	LAST GIBBOUS
Sat 11	POOR	03:02 – 05:02	15:23 – 17:23	
Sun 12	POOR	03:28 – 05:28	15:49 – 17:49	
Mon 13	POOR	04:09 – 06:09	16:29 – 18:29	LAST QUARTER
Tues 14	FAIR	04:50 – 06:50	17:11 – 19:11	
Wed 15	GOOD	05:32 – 07:32	17:54 – 19:54	
Thurs 16	GOOD	06:17 – 08:17	18:40 – 20:40	
Fri 17	FAIR	07:05 – 09:05	19:30 – 21:30	LAST CRESCENT
Sat 18	FAIR	07:56 – 09:56	20:23 – 22:23	
Sun 19	FAIR	08:50 – 10:50	21:18 – 23:18	
Mon 20	FAIR	09:47 – 11:47	22:15 – 00:15	
Tues 21	GOOD	10:44 – 12:44	23:13 – 01:13	NEW MOON
Wed 22	BEST	11:41 – 13:41	=	
Thurs 23	BEST	12:35 – 14:35	00:07 – 02:07	
Fri 24	BEST	13:28 – 15:28	01:02 – 03:02	
Sat 25	GOOD	14:19 – 16:19	01:54 – 03:54	
Sun 26	FAIR	15:09 – 17:09	02:44 – 04:44	
Mon 27	POOR	15:59 – 17:59	03:34 – 05:34	FIRST QUARTER
Tues 28	POOR	16:50 – 18:50	04:24 – 06:24	
Wed 29	POOR	17:43 – 19:43	05:17 – 07:17	
Thurs 30	POOR	18:39 – 20:39	06:11 – 08:11	
Fri 31	FAIR	19:35 – 21:35	07:07 – 09:07	FIRST GIBBOUS

These are the predicted **MAJOR** Solunar periods for this month, adjusted to Perth time.
 For anglers in the Pilbara and in Esperance, they will need to deduct approximately 15 minutes.
 For minor periods add approximately 6 hours 30 minutes to these times.

SUNRISE, SUNSET, MOONRISE AND MOONSET TIMES FOR PERTH JULY 2020

DAY / DATE	SUNRISE	SUNSET	MOONRISE	MOONSET
Wed 01	07:18	17:23	14:09	02:50 f
Thurs 02	07:18	17:24	14:51	03:57 f
Fri 03	07:18	17:24	15:38	05:04 f
Sat 04	07:18	17:25	16:30	06:10 f
Sun 05	07:17	17:25	17:27	07:11 f
Mon 06	07:17	17:26	18:28	08:07 f
Tues 07	07:17	17:26	19:28	08:55 f
Wed 08	07:17	17:26	20:28	09:37 f
Thurs 09	07:17	17:27	21:26	10:13 f
Fri 10	07:17	17:28	22:21	10:45 f
Sat 11	07:16	17:28	23:16	11:14 f
Sun 12	07:16	17:29	-	11:43
Mon 13	07:16	17:29	00:09	12:10
Tues 14	07:15	17:30	01:03	12:39
Wed 15	07:15	17:30	01:57	13:10
Thurs 16	07:15	17:31	02:53	13:45
Fri 17	07:14	17:31	03:51	14:24
Sat 18	07:14	17:32	04:50	15:09
Sun 19	07:13	17:33	05:49	16:01
Mon 20	07:13	17:33	06:46	17:00
Tues 21	07:12	17:34	07:39	18:04
Wed 22	07:12	17:34	08:26	19:10
Thurs 23	07:11	17:35	09:09	20:18
Fri 24	07:11	17:36	09:48	21:25
Sat 25	07:10	17:36	10:24	22:31
Sun 26	07:10	17:37	10:58	23:36
Mon 27	07:09	17:38	11:33	-
Tues 28	07:08	17:38	12:10 p	00:42
Wed 29	07:08	17:39	12:49 p	01:48
Thurs 30	07:07	17:39	13:33 p	02:54
Fri 31	07:06	17:40	14:23 p	03:59

Please Note:

These times will be adequate for general purpose use in the Perth metropolitan area. However, corrections must be applied for other locations in Western Australia.

Moon Rise:

Where a rise time is noted with a 'p', it means that the time listed is for the day previous.

Where a set time is noted with an 'f', it means that the time listed is for the following day.

This complication is because the Moon rises, transits and sets almost an hour later every night, so every few days there is a 24-hour 'calendar day' in which the Moon either doesn't rise, or doesn't set.

PREDICTED FREMANTLE TIDES JULY 2020

DAY / DATE	TIME AND PREDICTED HEIGHT							
Wed 01	06:59	1.17	16:22	0.72				
Thurs 02	07:17	1.24	17:07	0.65				
Fri 03	07:48	1.29	17:49	0.59				
Sat 04	08:22	1.31	18:30	0.57				
Sun 05	08:56	1.31	19:05	0.57				
Mon 06	09:27	1.29	19:38	0.60				
Tues 07	09:52	1.25	20:06	0.63				
Wed 08	10:12	1.21	20:30	0.68				
Thurs 09	10:36	1.16	20:52	0.73				
Fri 10	11:03	1.11	19:32	0.76				
Sat 11	11:30	1.06	19:34	0.77				
Sun 12	11:52	1.01	19:46	0.78				
Mon 13	06:00	0.99	08:38	0.98	09:31	0.98	19:50	0.79
Tues 14	06:06	1.04	19:28	0.80				
Wed 15	06:17	1.09	17:50	0.77				
Thurs 16	06:37	1.15	17:04	0.72				
Fri 17	07:04	1.19	17:12	0.67				
Sat 18	07:38	1.24	17:30	0.62				
Sun 19	08:15	1.27	17:56	0.58				
Mon 20	08:52	1.28	18:26	0.56				
Tues 21	09:31	1.28	19:00	0.56				
Wed 22	10:11	1.25	19:33	0.58				
Thurs 23	10:49	1.20	20:05	0.62				
Fri 24	11:24	1.13	20:27	0.68				
Sat 25	11:45	1.04	19:53	0.74				
Sun 26	04:08	0.88	05:26	0.88	11:49	0.95	19:14	0.77
Mon 27	04:12	0.94	19:06	0.76				
Tues 28	04:32	1.01	14:51	0.73	15:54	0.74	17:27	0.73
Wed 29	05:16	1.08	15:32	0.65				
Thurs 30	06:06	1.14	16:15	0.59				
Fri 31	06:53	1.18	16:55	0.56				

NOTE: These are the predicted tides for Fremantle and there may be some variation due to wind strength and direction.