

# REEL TALK

Surf Casting and Angling Club Inc

August 2020



## Surf Casting and Angling Club of WA (Inc.)

PO Box 2834, Malaga WA 6944

ABN 29 925 237 020

Email: [secretary@scac.net.au](mailto:secretary@scac.net.au)

Club Web page: <http://www.scac.net.au>

### **Acknowledgement of Donors**

*The club gratefully acknowledges the support from companies, organisations, club members and families for the donations towards our Presentation night.*

### **Club Members:**

Mal Head, Peter Osborne, John Curtis,

Bob Henderson, Alan Jones, Pat McKeown

Mark Hansen

### **Company Sponsors:**

Alvey Australia

Belmont City Medical Centre (Dr Sri Srigandan)

Bladon WA (Martin Wearmouth)

Halco Tackle

J M Gillies Agencies

Western Angler Magazine

Buildcorp Developments (Victor Schilo)

***Thank you for your valued support.***

## **August 2020 : Reel Talk Contents**

Cover	Eagle Bay Beach
	Acknowledgement of Donors
3	Contents
4	Club Committee and Life Members
5	President's Report
5	Member's Fee Schedule
5	August Meeting
6	2020 -21 Field Days
6	August Birthdays
7	Dirk Hartog Safari 2021
8	Presentation Night
9	July Field Day Report
12	Fishing Trip
13	Club Shirts
17	August Solunar Charts

# Club Committee for 2019 - 20

**President**

Martin Wearmouth  
0407 301 195  
[martin.wearmouth@gmail.com](mailto:martin.wearmouth@gmail.com)

**Vice President**

Peter Osborne

**Treasurer**

Victor Schilo  
0413 152 550  
[treasurer@scac.net.au](mailto:treasurer@scac.net.au)

**Secretary**

John Curtis  
0412 776 558  
[secretary@scac.net.au](mailto:secretary@scac.net.au)

**Reel Talk Editor**

Victor Schilo

**Dry Casting Officer**

Ron Thomas  
0407 630 053  
[dee.ron@bigpond.com](mailto:dee.ron@bigpond.com)

**Field Day Officer**

Martin Wearmouth  
0407 301 195  
[martin.wearmouth@gmail.com](mailto:martin.wearmouth@gmail.com)

**Assistant Field Day Officer**

Vince Tomazin

**Assistant Drycasting Officer**

Bob Henderson

**Committee Persons**

Gary Parkinson  
Chris Stickells

**Recorder**

Justin Rose  
[jwrose81@yahoo.com.au](mailto:jwrose81@yahoo.com.au)

**Website Coordinator**

Peet Wessels

**AAAWA Delegates**

Victor Schilo, Martin Wearmouth

All club emails should be sent to [secretary@scac.net.au](mailto:secretary@scac.net.au) and all correspondence posted by mail should be addressed to:

PO Box 2834, Malaga WA 6944

**SCAC Life Members**

George Holman, Eric Parker, Ian Cook, Bob Henderson, Terry Fuller, Mal Head, Peter Osborne

**Deceased life members:** Vic Davis, Doug Edward, Lloyd Dunn, Dudley Brown, Noel Knight, Les Shand, Ron Kildahl, Bob Klein, Jim Strong



## **President's report August 2020**



The August meeting is our Annual general meeting and we will be voting on committee positions, we will finish the night with some Pizza so come along and support the club, if you would like to be part of the committee please fill in a nomination form prior to the meeting night.

Preparation for the September presentation night is well under way so make sure you put the date in your calendar and attend this great event on Saturday night 19<sup>th</sup> September 2020.

We are now planning a Safari to Dirk Hartog island in July 2021, anyone interested in going please contact Vince for details.

*Martin Wearmouth; President*

---

## **2020 ANNUAL General Meeting**

Wednesday 12 August 2020 7.30pm

Coolbinia Sports Clubroom; Wordsworth Avenue, Yokine.

*Agenda: Please notify the Secretary if you have any items for General business.*

---

## **Membership Fees**

The SCAC Membership Fees for the 2020/21 year are due from the 1st July.

BUT there is good news, subject to ratification at the August AGM, fees are now:

Single Membership	\$70
Family Membership	\$80
Concession Membership	\$50
Concession Family	\$60

Payment can be made via EFT (Please note your name in the remittance), Cheque or Cash at the monthly meetings.

The Secretary will be sending out the contact information forms for all members to complete and return.

Bank details: Surf Casting and Angling Club  
BSB: 036 059  
A/C: 880334

<b>Field day venues for 2020/2021</b>		
<b>Dates</b>	<b>Venue</b>	<b>Boundaries</b>
22 - 23 August 2020	Rottnest Island and Open Local Lines down 6am Saturday Lines up 9am Monday	Rottnest and Open anywhere in WA
26 - 28 September 2020 Long Weekend	Reef Beach Bremer Bay and standard local Lines down 6am Saturday Lines up 9am Monday	Reef Beach and local as below at bottom of page
17 - 18 October 2020	Dunsborough to White Hills Lines down 9.00am Saturday Lines up 9am Sunday	Dunsborough to White Hills and local as below at bottom of page
14 - 15 November 2020	Cervantes to Leeman Lines down 9.00am Saturday Lines up 9am Sunday	Cervantes to Leeman and local as below at bottom of page
12 - 13 December 2020	Lancelin to Greenhead Lines down 9.00am Saturday Lines up 9am Sunday	Lancelin to Greenhead and local as below at bottom of page
Sunday 24 January and Monday 25th January 2021 make own long weekend Australia day is Tuesday 26th	Open Lines down 6.00am Sunday Lines up 9am Tuesday	Open anywhere in WA
13 - 14 February 2021	Dunsborough to White Hills Lines down 9.00am Saturday Lines up 9am Sunday	Dunsborough to White Hills and local as below at bottom of page
27 Feb - 1 March 2021 Long Weekend	Geraldton to Kalbarri Lines down 6am Saturday Lines up 9am Monday	Geraldton to Kalbarri and local as below at bottom of page
3 April – 5 April 2021 Easter Long weekend	Bluff Creek and standard local Lines down 6am Saturday Lines up 9am Monday	Cheyne's and Bluff Creek area and local as below at bottom of page
AAA only - 24 - 26 April 2021 ANZAC day Long Weekend	Cheyne's Beach/Bluff Creek see AAA website for details	Bremer Bay to Albany
<b>Local boundaries are from Lancelin in the North to Point Peron in the South</b> Lines Down for long weekends and Rottnest – Saturday 6.00am Lines up for long weekends and Rottnest – Monday 9.00am Lines Down on Standard weekends – Saturday 9.00am Lines up on Standard weekends – Sunday 9.00am <b>Sign-on / Weigh-in times, possible fish together spots and locations to be decided at the general meeting prior to the Field Day</b>		

## ***Birthdays for August***

Alissa Pizzolante 6<sup>th</sup>;    Theo Van Niekerk 7<sup>th</sup>;    Bob Henderson 8<sup>th</sup>;    Alan Jones 8<sup>th</sup>

Ian Taggart 24<sup>th</sup>;    Gary Gildersleeves 31<sup>st</sup>

***Enjoy your special day***

# Dirk Hartog Island Safari

## Surf Casters Dirk Hartog Safari July 2021

Dates: Friday 16/7/2021 to Sunday 25/7/2021

That includes 2 days traveling and 8 days on the island, staying at the block

Please contact Vince Tomazin if you are interested in going



Trip details as follows

- 16/7 - drive to shelter bay, Shark Bay and camp overnight.
- 17/7-24/7 - 7.30am - Barge picks up vehicles and transport to DHI. Drive north to The Block, unpack and fish for 8 days
- 25/7 - pack up drive south to pick up point by the barge and camp overnight. More fishing (if you feel like it)
- 26/7 - 7.30am barge picks up vehicles and transports to shelter bay. Drive to Perth.

1. camping fees - \$20/night per person.

2., barge fees - average of \$520 per vehicle. To DHI and back to mainland and a one of fee of \$35 per person

Average cost/person for 10 nights camping (8 nights on The Block) is

Camping  $10 \times \$20 = \$200$ , Barge per vehicle/2 ( $520/2$ ) = \$260

one fee barge per person \$35, **TOTAL per person (if 2 per car) \$495**

# **Surf Caster's Presentation Night**

Saturday 19<sup>th</sup> September  
At

Croatian Club

18 Wishart St, GWELUP

**FREE TO ALL MEMBERS**

**Save the date**

**Contact: John Curtis to book your table.**

0412 776 558

[secretary@scac.net.au](mailto:secretary@scac.net.au)



## *Surf Casters July 2020 open field day report by Martin Wearmouth*

We had an early start on Saturday morning, I picked up Gary at 5am any we headed south to Yallingup to start the field day, The trip was about 3 hours and our first stop was Smiths Beach as we had done well there last year but on arrival the beach at the south end that we fished was mostly washed away leaving a lot of exposed rocks and a 100 meter shallow area till the deep water, and it also had a lot of sea weed in the water and on the beach, we also looked at finding an area to fish on the rocks at the southern end of Smiths Beach but decided to go and look at Yallingup beach.



On arrival at the last carpark past Yallingup we took a walk down the hill to have a look at the beach, again it looked like a lot of sand had been taken away but we had a spot in front of some reef that had a gutter so we went back to the car and got the fishing gear, We started fishing about 9am but only had a few small fish stripping the baits, Gary was the first to catch a fish and it was a Mullet, over the next 2 hours Gary ended up with 3 Mullet and 3 Herring an I got 2 herring, at about 11.30 the bites had dropped off so we packed up and planned to do some rock fishing.

We moved to the rocky point as you come down the hill to Yallingup where we had fished before to find a new sign saying it is a sanctuary zone with no fishing allowed, so we continued on to Wyadup, when we arrived it was hard to find a parking spot due to a lot of walkers and school holiday visitors checking out the rocks and scenery, we had a bite to eat before making our way onto a rock ledge we fished last year.

Straight away the bites came thick and fast but mainly Blowfish managed to take the hook or strip the baits, Gary again was the 1<sup>st</sup> to catch a Buffalo Bream then a Blackfish, About an hour in Gary was trying to unhook a wrasse when the hook went into his thumb, as the hook had gone in quite deep and the point was coming out another part of his thumb he wanted to cut the hook, I only had a small pair of pliers that could not cut metal so I made a trip back to the car to get a pair of side cutters, once the hook was cut I pulled it through and we continued fishing, at this spot we ended up with some Buffalo Bream, Blackfish, Banded Sweep and Wrasse before heading to our chalet at the Yallingup Beach caravan park at 2pm.





We had a rest and sat in the afternoon sun looking at the ocean then decided to head to the beach at Eagle bay for the next fishing session at 3.30pm, again a lot of sand had gone and the deeper water was 60-70m out from the beach, we set up the gear and sent out some mulies in hope of some nice fish, I caught a couple of herring before being plagued with small tharwine, Gary caught a 32cm Salmon and on his last cast got a Sea Trumpeter, I Hooked a good Salmon but after a couple of jumps the small size 1 circle hook was pulled straight and the fish was gone, I did have a mulie on the same rig but the salmon had taken the small hook, We stayed till 7pm then packed up and returned to our Chalet.





After a good night sleep we headed back to the spot at Yallingup beach at 6.45am and caught some more Herring, Gary also got a whiting and I caught and released a fish I could not identify and after sending the image to John Curtis found out it was a Western Buffalo Bream, as the tide and swell was rising the sea weed moved in about 8am and made it hard to hold the bottom, not masses of weed but enough to keep moving the rigs onto the beach so we packed up at 8.30am and went to the chalet to have a shower before the trip home.

So, no trip to brag about but the weather was good with light winds and some great scenic fishing spots, Yallingup area has quite a few fishing options even in bad weather so I could recommend a trip. Only 2 other members fished the field day,

**Ron Thomas** fish at Quobba Station but conditions proved challenging he ended up with 5 species, Trevally, Dart, Sweetlip, Pink Snapper and Estuary Cod.

**Mark Hansen** fished the South Mole Saturday late morning to mid-afternoon and then for an hour Sunday morning and caught 1 Wrasse, 1 Goatfish, 5 herring, 1 Butterfish + lots of blowies.



**Western Buffalo Bream**

ANGLER		Species Trevally Bludger	Species Dart all	Species Sweetlip (all species)	Species Snapper Pink	Species Cod Estuary	Species	Species	Species	Species	Species	Species	Total weight	No. of Species	No. of fish	F.D. points	Attendance Field Day	General Meeting	Total points
Ron Thomas	Number	1	1	1	1	1							7.80	5	5	133.0	1		143.0
	Total weight	1.12	1.48	0.75	1.30	3.15													
	Weight of best																		
		Species Herring Australian	Species Mullet Yelloweye	Species Western Rock Blackfish	Species Salmon Western Australian	Species Buffalo Bream - Silver Drummer 1 only	Species Trumpeter Sea	Species Wrasse (all species) 1 only	Species Whiting	Species Sweep Banded	Species Goatfish	Species Butterfish Western							
Gary Parkinson	Number	4	3	1	1	1	1	1	1				2.69	8	13	119.9	1	1	139.9
	Total weight	0.40	0.54	0.20	0.80	0.30	0.15	0.20	0.10										
	Weight of best																		
Martin Wearnmouth	Number	9		3		1		1	1	2			2.40	6	17	101.0	1	1	121.0
	Total weight	0.90		0.60		0.30		0.20	0.10	0.30									
	Weight of best																		
Mark Hansen	Number	5						1			1	1	1.04	4	8	58.4	1	1	78.4
	Total weight	0.50						0.20			0.20	0.14							
	Weight of best																		

Top scores up to July		
Rank	Angler	Total points
1	Martin Wearnmouth	622.7
2	Peet Wessels	506.7
3	Ron Thomas	258.9
4	Vince Tomazin	214.6
5	Mark Hansen	199.1
6	Gary Parkinson	194.7
7	Sandra Wessels	158.0
8	Dom - visitor	120.0
9	David Wilding	59.0
10	David Trainer	30.0

Field day prizes for July			
Section	Angler	Species	Weight
Best scale fish	Ron Thomas	Cod Estuary	3.15
Best bag of scale fish	Ron Thomas		7.80
Best shark			
Best bag including sharks			

## Moore river 2020 Chris Stickells

On Friday the 17<sup>th</sup> of July we headed up to Moore River, for a weekend away /birthday celebration for my mate Nathan and his stepson Jonathan. I met Nathan at his home just after work and we quickly headed up to Moore river.

We arrived approximately 6 pm, the girls and Jonathan went up earlier in the day and had already organised the chalet. We had dinner and settled in for the night with our drinks. Saturday was wet and windy which meant fishing the beach was off the cards. So, Nathan and I headed up the river to try for some bream while the girls relaxed and went back to the chalet with Jonathan.

It didn't take long before the bream were located though no legal size so catch and release was the go; average was 20cm. We headed back for some lunch with the girls and Jonathan. After lunch the boys went for a bush walk. We followed the beach walking track which was challenging in places due to erosion.

We trekked this around to the lighthouse and then back to the chalet where we were staying for the evening. Next morning was Sunday and it was time for Helen and myself to head back to Perth, as our companions decided to stay another night to try fishing again as the wind was minimal on Sunday. Shortly after I got home, I got a message from Nathan (Chris! Chris! I just saw the fox that stole your birthday cake!) but it was too late for us to go back.



## **CALLING NEW VOLUNTEERS!**

Fishability, an organisation providing recreational fishing opportunities for people with disabilities, is calling for new volunteers, for our upcoming season, commencing in September.

Fishability is a long established Western Australian not for profit organisation, that works with the community to promote fishing activities as a means of acceptance and inclusion for people with disabilities. Fishability provides a range of jetty and boat activities throughout the Perth metro area and regional programs in Geraldton, Mandurah, Busselton and Albany. With support from a team of volunteers, and with the use of modified rods, reels and vessels, Fishability caters for children and adults living in our communities with disabilities, offering fishing experiences in a safe and welcoming environment.

The Program is run entirely by volunteers and Fishability is seeking **NEW VOLUNTEERS** for our Perth Metro North and Perth Metro South Programs.

Volunteers with Fishability enjoy:

- The great outdoors and meeting people;
- Helping those who may need a little extra support;
- Working as part of a team and sharing knowledge, stories and a laugh;
- Fishing! Even those with minimal experience but a willingness to learn are welcome.

As a valued member of the Fishability team, you will have access to ongoing training opportunities, networking and camaraderie from a group of likeminded people.

The Fishability program is delivered year-round (except July/Aug due to the weather) with various jetty and boat schedules. There is a time and a location to suit everybody!

For further information and to begin your volunteering journey with us, please contact Fishability's Development Officer, Jade Hurst at [developmentofficer@fishability.org.au](mailto:developmentofficer@fishability.org.au) or ph: 0434 522 050.

---

## **Surf Casters Club polo shirts ordering details**

**1 free shirt per member with payment of 2020 membership fees**

**PS20 Black/Gold Men's short sleeve polo shirt Embroidered on Chest with SCAC logo**



**PS20 Men's CoolDry® Raglan Short Sleeve Contrast Polo**

EASY FIT	S	M	L	XL	2XL	3XL	4XL	5XL
Half Chest	53.5	56.0	58.5	61.0	63.5	66.0	68.5	71.0
Body Length	70.0	72.0	74.0	76.0	78.0	80.0	82.0	84.0

Weight & size measurements are for guidance only



**PS43 Black/Gold Men's long sleeve polo shirt Embroidered on Chest with SCAC logo**



#### PS43 Men's CoolDry® Raglan Long Sleeve Contrast Polo

EASY FIT	S	M	L	XL	2XL	3XL	4XL	5XL
Half Chest	53.5	56.0	58.5	61.0	63.5	66.0	68.5	71.0
Body Length	70.0	72.0	74.0	76.0	78.0	80.0	82.0	84.0

Weight & size measurements are for guidance only



#### PS19 Black/Gold Ladies short sleeve polo shirt Embroidered on Chest with SCAC logo



#### PS19 Ladies' CoolDry® Raglan Short Sleeve Contrast Polo

EASY FIT	8	10	12	14	16	18
Half Chest	46.0	48.5	51.0	53.5	56.0	58.5
Body Length	62.0	64.0	66.0	68.0	70.0	72.0

Weight & size measurements are for guidance only



**PS44 Black/Gold Ladies long sleeve polo shirt Embroidered on Chest with SCAC logo**



**PS44 Ladies' CoolDry® Raglan Long Sleeve Contrast Polo**

MODERN FIT	8	10	12	14	16	18
Half Chest	46.0	48.5	51.0	53.5	56.0	58.5
Body Length	62.0	64.0	66.0	68.0	70.0	72.0

Weight & size measurements are for guidance only



**PS24 Black/Gold Kids short sleeve polo shirt Embroidered on Chest with SCAC logo**



**PS24 Kids' CoolDry® Raglan Short Sleeve Contrast Polo**

EASY FIT	4K	6K	8K	10K	12K	14K	16K
Half Chest	38.5	41.0	43.5	46.0	48.5	51.0	53.5
Body Length	52.0	55.0	58.0	61.0	64.0	67.0	70.0

Weight & size measurements are for guidance only



**PS43K Black/Gold Kids long sleeve polo shirt Embroidered on Chest with SCAC logo**



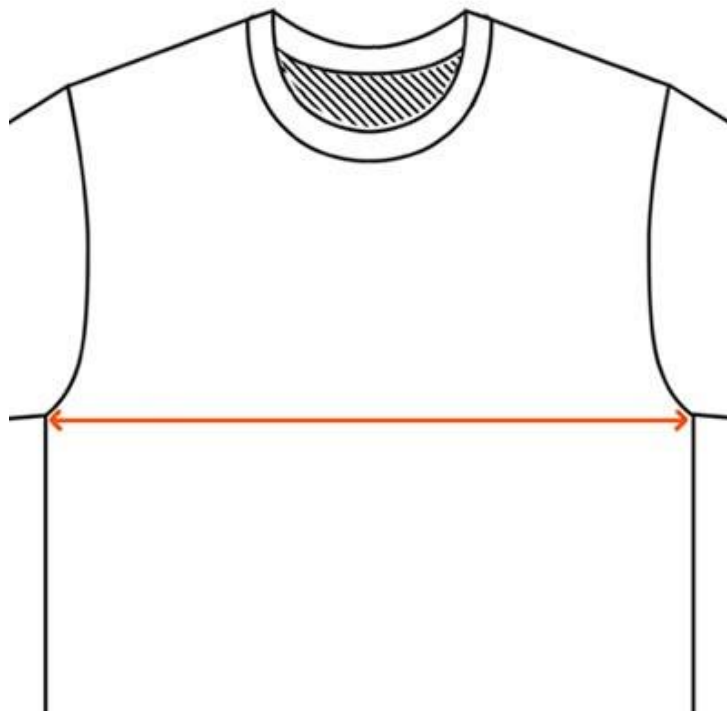
**PS43K Kids' CoolDry® Raglan Long Sleeve Contrast Polo**

EASY FIT	4K	6K	8K	10K	12K	14K	16K
Half Chest	38.5	41.0	43.5	46.0	48.5	51.0	53.5
Body Length	52.0	55.0	58.0	61.0	64.0	67.0	70.0

Weight & size measurements are for guidance only



On a shirt that fits you well lay it flat on a table to measure just under the arms from seam to seam,  
Place one end of the measuring tape to the end of the seam and stretch it across the chest to the other seam.  
Once you have your size compare that to the half chest size on the above charts, it will be best to go up in size if you  
measurement is between 2 sizes, eg if you measure a men's shirt half chest at 62cm go up to a size 2XL which is 63.5cm.



**Ordering form below, please fill in and take to a meeting  
or email all details to [secretary@scac.net.au](mailto:secretary@scac.net.au)**

<b>Members name</b>	<b>Polo style</b>	<b>Size</b>	<b>Add pocket on left chest</b>
1 free shirt per member with payment of 2020 membership fees	Eg PS20 Men's short sleeve	Eg XL	Optional Yes or No

Shirts will be embroidered to order allow 3 weeks for them to be ready, you can collect at a meeting or from Bladon WA in Balcatta (contact Martin 0407 301 195)

**Extra shirts can be purchased if needed prices are below**

**Men's, Ladies and Kids Short Sleeve \$22.00 each (add a pocket extra \$5.00 total \$27.00)**

**Men's, Ladies and Kids Long Sleeve \$25.00 each (add a pocket extra \$5.00 total \$30.00)**



# SOLUNAR PREDICTIONS FOR PERTH FOR AUGUST 2020

DAY / DATE	PREDICTION	PREDICTED PRIME TIMES		MOON PHASE
Sat 01	FAIR	20:32 – 22:32	08:04 – 10:04	
Sun 02	BEST	21:28 – 23:28	09:01 – 11:01	
Mon 03	GOOD	22:21 – 00:21	09:55 – 11:55	
Tues 04	GOOD	23:11 – 01:11	10:47 – 12:47	FULL MOON
Wed 05	BEST	23:58- 01:58	11:35 – 13:35	
Thurs 06	FAIR	=	12:20 – 14:20	
Fri 07	FAIR	00:42 – 02:42	13:03 – 15:03	
Sat 08	POOR	01:24 – 03:24	13:44 – 15:44	LAST GIBBOUS
Sun 09	POOR	02:05 – 04:05	14:25 – 16:25	
Mon 10	POOR	02:45 – 04:45	15:06 – 17:06	
Tues 11	POOR	03:27 – 05:27	15:48 – 17:48	
Wed 12	POOR	04:10 – 06:10	16:32 – 18:32	LAST QUARTER
Thurs 13	FAIR	04:56 – 06:56	17:20 – 19:20	
Fri 14	GOOD	05:45 – 07:45	18:10 – 20:10	
Sat 15	GOOD	06:37 – 08:37	19:04 – 21:04	
Sun 16	FAIR	07:32 – 09:32	20:01 – 22:01	LAST CRESCENT
Mon 17	FAIR	08:30 – 10:30	20:58 – 22:58	
Tues 18	FAIR	09:27 – 11:27	21:55 – 23:55	
Wed 19	GOOD	10:24 – 12:24	22:51 – 00:51	NEW MOON
Thurs 20	BEST	11:18 – 13:18	23:45 – 01:45	
Fri 21	BEST	12:11 – 13:11	=	
Sat 22	BEST	13:03 – 15:03	00:37 – 02:37	FIRST CRESCENT
Sun 23	GOOD	13:54 – 15:54	01:29 – 03:29	
Mon 24	FAIR	14:56 – 16:56	02:20 – 04:20	
Tues 25	POOR	15:40 – 17:40	03:13 – 05:13	
Wed 26	POOR	16:34 – 18:34	04:07 – 16:07	FIRST QUARTER
Thurs 27	POOR	17:30 – 19:30	05:02 – 07:02	
Fri 28	POOR	18:27 – 20:27	05:59 – 07:59	
Sat 29	FAIR	19:22 – 21:22	06:15 – 08:15	
Sun 30	FAIR	20:16 – 22:16	07:49 – 09:49	FIRST GIBBOUS
Mon 31	BEST	21:06 – 23:06	08:41 – 10:41	

These are the predicted **MAJOR** Solunar periods for this month, adjusted to Perth time.

For anglers in the Pilbara and in Esperance, they will need to deduct approximately 15 minutes.

For minor periods add approximately 6 hours 45 minutes to these times.

# SUNRISE, SUNSET, MOONRISE AND MOONSET TIMES FOR PERTH AUGUST 2020

DAY / DATE	SUNRISE	SUNSET	MOONRISE	MOONSET
Sat 01	07:05	17:41	15:17	05:01 f
Sun 02	07:05	17:41	16:15	05:58 f
Mon 03	07:04	17:42	17:15	06:48 f
Tues 04	07:03	17:43	18:15	07:32 f
Wed 05	07:02	17:43	19:14	08:10 f
Thurs 06	07:01	17:44	20:11	08:44 f
Fri 07	07:00	17:45	21:06	09:14 f
Sat 08	07:00	17:46	22:00	09:43 f
Sun 09	06:59	17:46	22:53	10:11 f
Mon 10	06:58	17:46	23:47	10:39 f
Tues 11	06:57	17:47	=	11:09
Wed 12	06:56	17:48	00:42	11:41
Thurs 13	06:56	17:48	01:38	12:18
Fri 14	06:54	17:49	02:36	13:00
Sat 15	06:53	17:50	03:35	13:48
Sun 16	06:52	17:50	04:32	14:44
Mon 17	06:51	17:51	05:27	15:46
Tues 18	06:50	17:52	06:17	16:52
Wed 19	06:49	17:52	07:03	18:01
Thurs 20	06:47	17:53	07:44	19:10
Fri 21	06:46	17:53	08:22	20:18
Sat 22	06:45	17:54	08:58	21:26
Sun 23	06:44	17:55	09:33	22:34
Mon 24	06:43	17:55	10:10	23:41
Tues 25	06:42	17:56	10:49	=
Wed 26	06:41	17:57	11:32	00:48
Thurs 27	06:39	17:57	12:19	01:53
Fri 28	06:38	17:58	13:11	02:56
Sat 29	06:37	17:58	14:08	03:53
Sun 30	06:36	17:59	15:07	04:45
Mon 31	06:35	18:00	16:06	05:30

## Please Note:

These times will be adequate for general purpose use in the Perth metropolitan area. However, corrections must be applied for other locations in Western Australia.

## Moon Rise:

Where a rise time is noted with a 'p', it means that the time listed is for the day previous.

Where a set time is noted with an 'f', it means that the time listed is for the following day.

This complication is because the Moon rises, transits and sets almost an hour later every night, so every few days there is a 24-hour 'calendar day' in which the Moon either doesn't rise, or doesn't set.

# PREDICTED FREMANTLE TIDES AUGUST 2020

DAY / DATE	TIME AND PREDICTED HEIGHT							
Sat 01	07:37	1.20	17:32	0.54				
Sun 02	08:17	1.21	18:05	0.55				
Mon 03	08:55	1.20	18:32	0.57				
Tues 04	09:28	1.17	18:51	0.60				
Wed 05	01:00	0.76	02:14	0.75	09:53	1.13	19:02	0.64
Thurs 06	00:51	0.77	03:03	0.76	10:12	1.09	18:44	0.68
Fri 07	00:55	0.80	03:48	0.77	10:31	1.04	18:22	0.70
Sat 08	01:15	0.83	04:33	0.79	10:55	0.99	18:23	0.71
Sun 09	01:43	0.87	05:27	0.82	11:19	0.94	18:32	0.72
Mon 10	02:15	0.91	06:42	0.85	09:23	0.88	18:38	0.72
Tues 11	02:56	0.95	08:23	0.86	09:07	0.86	18:12	0.72
Wed 12	03:43	0.99	17:18	0.70				
Thurs 13	04:36	1.02	16:06	0.66				
Fri 14	05:35	1.06	16:12	0.62				
Sat 15	06:31	1.11	16:29	0.57				
Sun 16	07:20	1.15	16:47	0.54				
Mon 17	08:06	1.18	17:09	0.52				
Tues 18	08:50	1.19	17:33	0.52				
Wed 19	00:28	0.75	01:23	0.74	09:33	1.18	17:57	0.54
Thurs 20	00:13	0.75	02:28	0.73	10:18	1.13	18:18	0.58
Fri 21	00:33	0.78	03:19	0.72	11:06	1.05	18:32	0.64
Sat 22	01:00	0.81	04:15	0.73	12:27	0.95	18:24	0.70
Sun 23	01:29	0.86	05:23	0.75	13:29	0.84	17:42	0.72
Mon 24	01:58	0.91	13:00	0.73	14:22	0.74	17:31	0.70
Tues 25	02:32	0.96	13:44	0.63	15:17	0.64	16:04	0.64
Wed 26	00:56	0.98	01:24	0.98	03:14	1.00	14:26	0.56
Thurs 27	04:05	1.03	15:08	0.52				
Fri 28	05:11	1.04	15:47	0.50				
Sat 29	06:57	1.06	16:23	0.51				
Sun 30	07:45	1.07	16:50	0.53				
Mon 31	08:22	1.07	17:00	0.56	23:26	0.73		

**NOTE:** These are the predicted tides for Fremantle and there may be some variation due to wind strength and direction.